

Calculation Formula for

Vapor Score

Calcium Chloride tests

$$\frac{\text{Weight Gain} \times 118.932}{\text{Total Hours}} = \text{Pounds}$$

Test Result Spreadsheet

| Test No. | Start Date | Start Weight | pH | End Date | End Weight | Weight Gain |
|----------|------------|--------------|----|----------|------------|-------------|
| 1. | | | | | | |
| 2. | | | | | | |
| 3. | | | | | | |
| 4. | | | | | | |
| 5. | | | | | | |
| 6. | | | | | | |
| 7. | | | | | | |
| 8. | | | | | | |
| 9. | | | | | | |
| 10. | | | | | | |
| 11. | | | | | | |
| 12. | | | | | | |
| 13. | | | | | | |
| 14. | | | | | | |
| 15. | | | | | | |
| 16. | | | | | | |
| 17. | | | | | | |
| 18. | | | | | | |
| 19. | | | | | | |
| 20. | | | | | | |

Test results can be entered online at
www.vaporscore.com
on our moisture calculator for instant results

VAPOR SCORE



VAPOR SCORE

website: vaporscore.com

Email: info@vaporscore.com

Phone: 225-Dome-Kit (366-3548)

Fax: 225-Dome-Fax (366-3329)



VAPOR SCORE

www.vaporscore.com

ANHYDROUS CALCIUM CHLORIDE
MOISTURE TEST KITS



Vapor Score Calcium Chloride and Alkalinity Test Kits meet and comply with both ASTM F1869-11 and ASTM F710-11. Test used to measure the vapor emission rate of your concrete slab and its acceptability of floor coverings.

Commonly Asked Questions

How many test are required?

ASTM F1869 calls out for 3 tests for the first 1000 sq ft and 1 test for each 1000 sq ft. after that.

How long should tests be placed?

Test should be placed between 60 to 72 hours.

What should test conditions be like in testing facility?

Building should have a temperature between 65° and 75° Fahrenheit and 40 - 60% relative humidity.

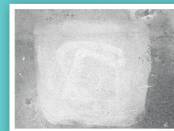
What is the value of test results or MVER?

Moisture vapor emission rate (MVER) is the amount of water vapor in pounds emitted from 1000 sq ft area of concrete flooring during a 24 hour period. This number or figure corresponds to flooring manufactures acceptable tolerance.

Moisture Testing Procedures

Vapor Score Calcium Chloride test kit meet and conform to ASTM F1869-11

Remove Calcium Chloride test from sealed pouch. Grind an area 20" x 20" removing any dirt, residue, and curing compound. Pass rag over area to remove all dust.



Weigh dish using a gram scale (scales should be accurate to .10 g) Please do NOT remove tape prior to weighing.

Document all required information, such as test number, location, weight, date, and time. This information should be placed on dish lid as well as the spreadsheet provided.



Remove black tape from dish and attach to interior of dome.

Carefully remove cap and place dish on slab making sure not to spill (pellets should be level throughout dish). Cap can be slid under dish for safe keeping. Test should not be placed on a cracks or joints.

Remove white release tape from dome sealant and center directly over dish. Press down firmly on all edges to ensure an air tight seal (this can be tested by putting a slight amount of pressure on center of dome to make sure no air escapes).



Allow test to remain undisturbed for 60 - 72 hours. Cut open dome and carefully cover with lid and original black vinyl tape. Be careful not to spill any of the constant inside of dish.

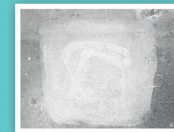
Immediately weigh dish using same gram scale. Document results on both dish lid as well as spreadsheet. Visit www.vaporscore.com to input test results easily or calculate using formula provided.



Alkalinity Test Procedures

Vapor Score Alkalinity Test meets and conforms to ASTM F710-11

Sand a 12 inch section of the concrete floor with an electric grinder. You can manually sand the concrete if you do not have access to an electric sander. Sweep up the concrete dust with a broom or vacuum cleaner.



Hold one end of a pH testing strip against the surface of the sanded concrete.



Drop one drop of distilled water (included) on the pH test strip. The test strip must be pressed against the concrete to get results.

Compare the color of the test strip to the pH color guide included in your test kit.

