

# EFFLORESCENCE CLEANER

## PRODUCT DESCRIPTION

RadonSeal® Efflorescence Cleaner is liquid applied cleaner that chemically breaks down and removes efflorescence, salt deposits, lime stains, and rust from concrete, brick, pavers, and other masonry surfaces. Low odor, non-corrosive to skin, and ease of application make it particularly suitable for indoor and outdoor horizontal and vertical surfaces.

## ADVANTAGES




WATER-SOLUBLE



SKIN SAFE



LOW ODOR



FAST WORKING



EASY USE



INDOOR / OUTDOOR

## USES

RadonSeal Efflorescence Cleaner can be safely used on a wide variety of building materials and architectural structures:



BRICK



LIMESTONE



BLOCKS



STUCCO



CONCRETE



PAVERS

## PACKAGING

Available in:  
1-gallon jugs  
5-gallon pails



## SHIPPING

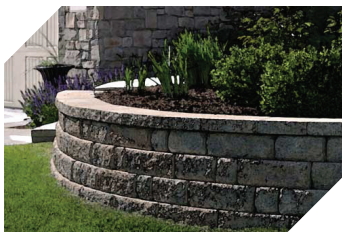


UPS Ground Tracking

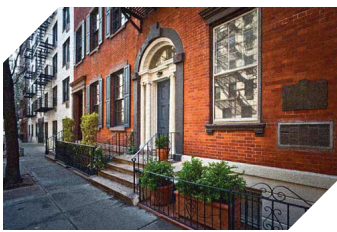
## COVERAGE | APPLICATOR

Coverage depends upon amount of efflorescence (approximate): 100-200 sq. ft. per gallon

Apply using a plastic hand-pump sprayer equipped with fan tip nozzle. Alternatively, a 3/4" paint roller or brush can be used if spraying is not applicable.



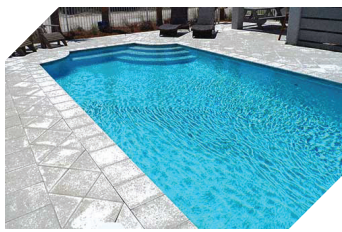
RETAINING WALLS



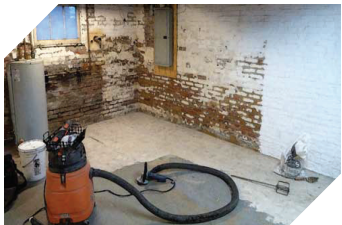
HISTORICAL BUILDINGS



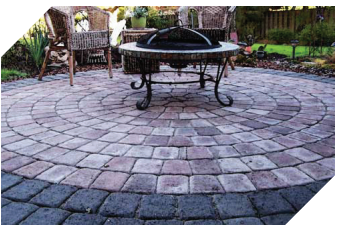
SIDEWALKS



POOL DECKS



BASEMENTS



PATIOS



GARAGE FLOORS



GROUT

## PHYSICAL CONSTANTS

Specific Gravity:	(H2O=1) 1.2@ 24° C.
Solubility in Water:	Excellent
Evaporation Rate:	Same as water
pH:	1.0 (Non-Corrosive to Skin)
Shelf Life:	1 Year
Method of Application:	Sprayer
Storage:	40-90 Deg. F

## PREVENT EFFLORESCENCE

**Deep-Seal the Substrate** – Waterproof the substrate deep inside to prevent water migration. How simple! No more efflorescence can be carried to the surface. Follow these simple steps:

**STEP 1** – Remove the efflorescence with RadonSeal® Efflorescence Cleaner.

**STEP 2** – Deep-seal the concrete, concrete blocks, or cinder blocks with RadonSeal® Penetrating Concrete Sealer.

In case of bricks, pavers, and porous masonry use LastiSeal Brick & Masonry Sealer.

## WHEN IT'S NOT EFFLORESCENCE

RadonSeal® Efflorescence Cleaner is extremely effective for the removal of efflorescence, dissolved salts, lime, and alkalis. However, lime (calcium hydroxide) in the efflorescence gradually reacts with carbon dioxide in the air (carbonation), forming calcium carbonate (CaCO3). The carbonate is difficult to remove, may require multiple applications of the Efflorescence Cleaner or mechanical abrasion.

**Rocky Build-Up** – A thick rocky build-up (calcium carbonate) is created by long-term efflorescence and carbonation. It has to be removed with a chisel, grinder, or blasting unit.

**Streaking** – When mortar, plaster, or stucco with a very high lime content is exposed to water, rain or sprinklers, the lime gets washed out and runs down on the surface. The dissolved lime reacts very quickly to become carbonate. White streaks on brick walls are typical. This may be removed using our Efflorescence Cleaner, but mechanical means is often necessary.

